



Curapuls 970



Unit for continuous and pulsed
shortwave therapy



PARTNER FOR LIFE



Continuous and pulsed shortwave therapy

Apart from the therapeutic effect of pulsed shortwave therapy, as described with the Curapuls 670, continuous shortwave therapy can also be applied with the the Curapuls 970, the real diathermy. By using the different methods of placing the electrodes (transverse, longitudinal or co-planary), or by using different sized electrodes, a thermal effect can be obtained in selected parts of the body. As the continuous output also has a stronger effect in the surface layers, the patient will also experience a strong thermal effect.

Curapuls 970

Unit for continuous and pulsed shortwave therapy

The continuously adjustable intensity and the output of 400 Watt provide optimum application possibilities. Continuous shortwave therapy increases the circulation and stimulates the metabolism. The pulsed peak power can be set to a maximum of 1000 Watts. The related average power is, however, much lower. Biological processes, which should not be heat-treated, can therefore be treated a-thermally.

The electrodes

An electrical field can be created with the disc electrodes or the rubber electrodes, depending on the shape and size of the body part to be treated. A choice can be made from a wide range of capacitive electrodes. A magnetic field can be created with the Circuplode or with the Flexiplode. The treatment planes of the Flexiplode can be adjusted to fit the body part.



Curapuls 970

Striking effects

Besides the well known effects of heat therapy with continuous radiation, the unit's pulsed mode will stimulate wound healing, oedema and haematoma absorption, pain reduction and stimulation of the peripheral circulation.

Easy to move

Four large wheels make the Curapuls 970 easy to move within your practice. Two wheels can be locked to immobilise the unit.

- Continuous and pulsed output
- Conveniently arranged display
- Wide range of electrodes
- Four large castors
- Adjustable electrode arms

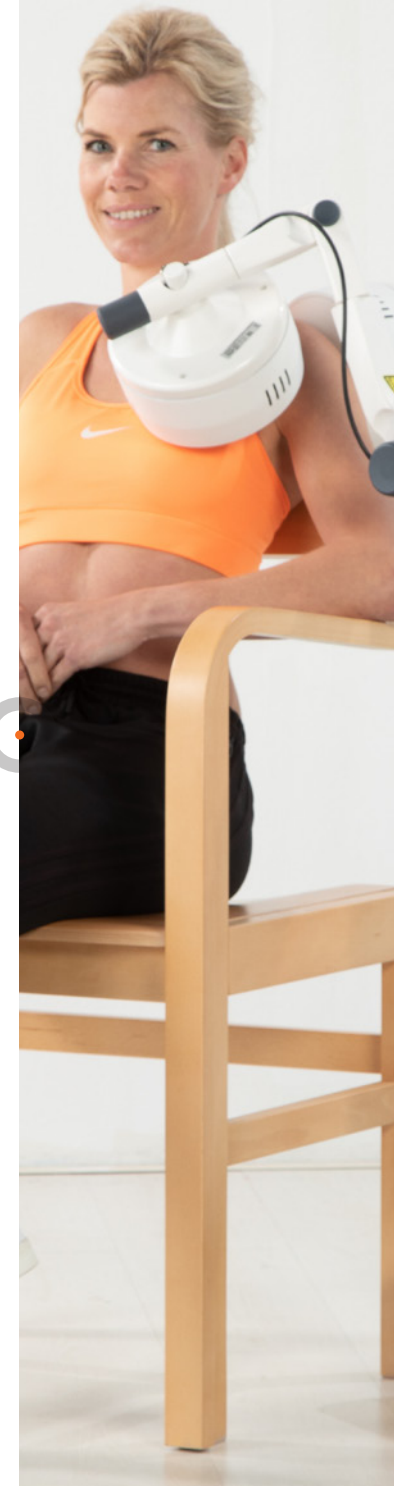
Curapuls 970

1419942 Curapuls 970

Standard accessories

- 1419751 Operating manual Curapuls 970
- 3441306 Neon checklight for Curapuls 970
- 1462531 Disc (Schliephake) electrode Ø 130 mm for Curapuls 970, 2x
- 1462416 Electrode cable for Curapuls 970, 2x
- 1462541 Electrode arm for Curapuls, 2x

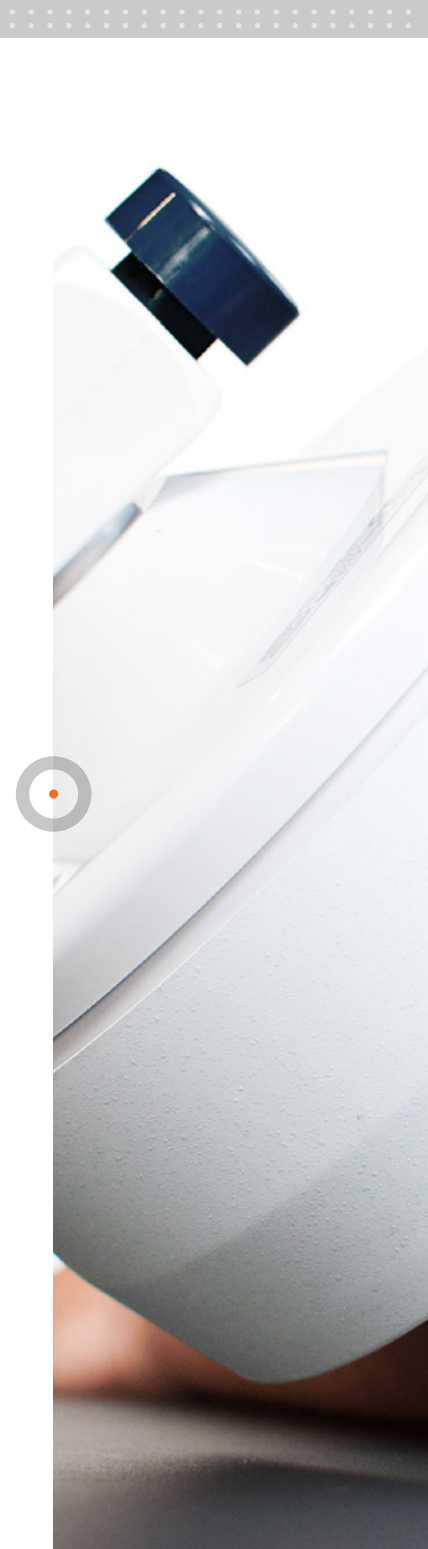
ORDERING DATA



Curapuls 970

TECHNICAL SPECIFICATIONS

Generator frequency:	27.12 MHz, \pm 0.6%
Output power:	continuous HF max. 400 W, pulsed HF max. 1000 W (peak)
Pulse duration:	ca. 400 μ s
Pulse repetition frequency:	15-200 Hz adjustable in 10 steps
Mains supply:	230-240 V / 50 Hz
Mains voltage variation:	approx. \pm 10%
Current consumption:	approx. 6 A (at 230 V)
Dimensions (wxdxh, without arms):	56x43x92.5 cm
Length electrode arms:	93 cm
Weight:	ca. 80 kg



Curapuls 970

ACCESSORIES

Flexiplode & Circuplode

Induction electrodes are particularly well-suited for the treatment of deeper-lying tissues. The adjustable treatment planes of the Flexiplode ensure optimum adaptation to the body surface. The large surface totalling 412x225 mm enables treatment of larger body parts in one application.

Optional accessories

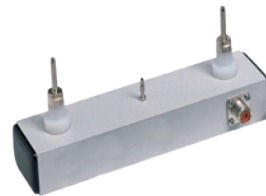
- 1462541 Electrode arm for Curapuls
- 1462416 Electrode cable for Curapuls 970
- 1462443 Adapter for Circuplode Ø 140 mm 1462453
- 1462453 Circuplode Ø 140 mm
- 1462423 Flexiplode for Curapuls 970



1462541



1462416



1462443



1462453



1462423

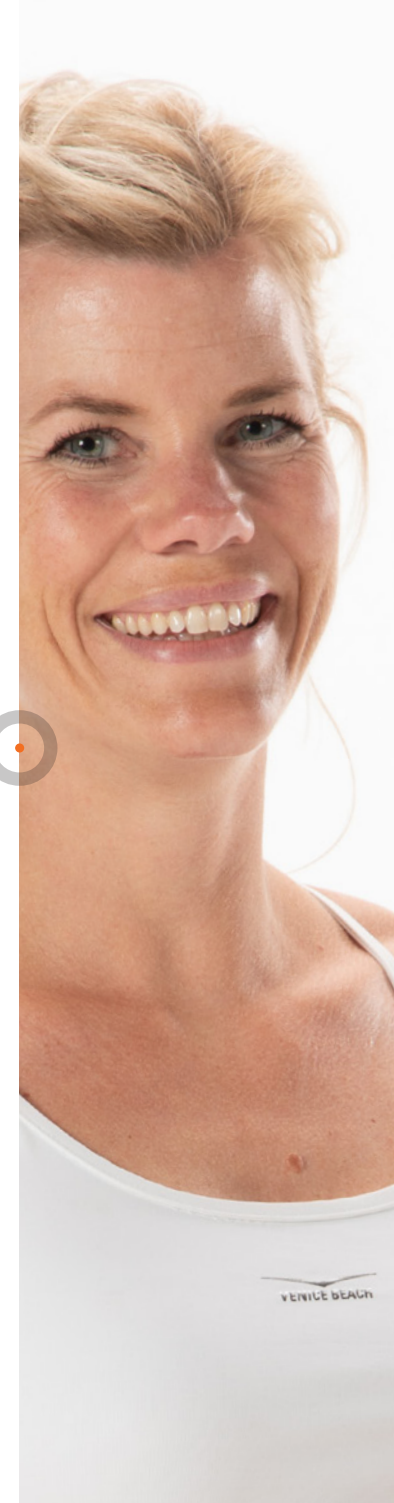
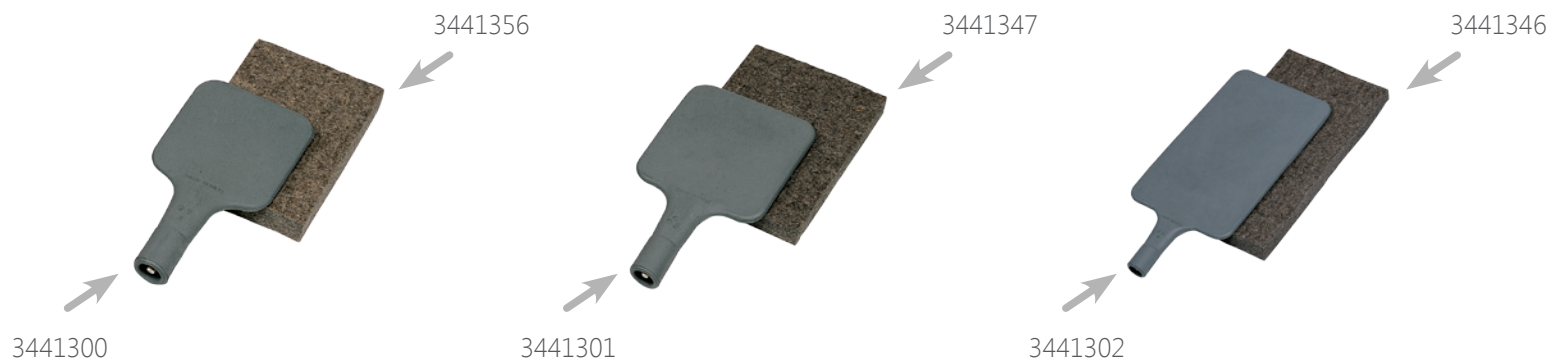


Curapuls 970

ACCESSORIES

Optional accessories

- 3441300 Flexible rubber electrode 9,5x10 cm
- 3441301 Flexible rubber electrode 12x12 cm
- 3441302 Flexible rubber electrode 15x25 cm
- 3441356 Felt spacer 10,5x15 cm, for flexible electrode 9,5x10 cm (3441300)
- 3441347 Felt spacer 13x17 cm, for flexible electrode 12x12 cm (3441301)
- 3441346 Felt spacer 16x30 cm, for flexible electrode 15x25 cm (3441302)



Curapuls 970

ACCESSORIES

Optional accessories

- 1462531 Disc (Schliephake) electrode Ø 130 mm
- 1462533 Disc (Schliephake) electrode Ø 42 mm
- 1462532 Disc (Schliephake) electrode Ø 85 mm
- 3441306 Neon checklight for Curapuls 970
- 1462461 Indicator for Circuplode 1462453
- 1462417 Two-way plug, for multi-electrode technique, for Curapuls 970
- 1480803 Earth potential-equalization cable 5 m



1462531



1462533



1462532



3441306



1462417



1480803



Curapuls 970

ACCESSORIES

Furniture for shortwave

Special for treatment with shortwave and microwave equipment we offer various furniture. With this furniture there won't occur any heat concentrated areas.

3441401 Treatment chair, clear lacquered wood

3441337 Treatment couch, clear lacquered wood, 190x60x75 cm

3441338 Footrest, clear lacquered wood





Curapuls 970



Unit for continuous and pulsed
shortwave therapy

Enraf-Nonius B.V. | Vareseweg 127 | 3047 AT Rotterdam | The Netherlands
www.enraf-nonius.com | info@enraf-nonius.nl | + 31 - (0) 10 20 30 600



PARTNER FOR LIFE