

RFDT: Robotic Flexion-Distraktion Therapy

Robotically controlled passive flexion with active or passive distraction therapy is applied to the patient's Lx / Cx Spine in terms of symptomatic or therapeutic aspects of the spine.

RDMT: Robotic Dynamic Mobility Therapy.

Robotically controlled dynamic mobility therapy is applied passively to the patient's Lx / Cx Spine, in terms of symptomatic or therapeutic aspects of the spine. . Dynamic mobility for Axial Rotation, Lateral flexion, flexion-extension in Lx spine and Flexion-Extension in the Cx spine can be delivered individually or in combination.

- The angle of each position will be displayed on the cockpit screen. convenient to achieve virtually 100% repeatability from session to session. RSDC eliminates variability.
- Real-time digital treatment tracking
- Delivers continuous readout and graphing of treatment protocols
- Specific vertebral targeting for a precise treatment.
- Set-up is quick, easy, up and running since no ropes or pulleys are required.
- Comfortable therapy via the flexion and oscillation capability
- Table facilitates the incorporation of manual techniques with traction
- Electric Elevation Range: 21-29"
- Cervical capture headpiece
- Signature belting system
- Lifting Capacity: 350 lbs.
- User-defined treatment hold and relax times
- Cockpit with 10" color touch screen, controls entire system with an easy navigation.



RSD-4D SYSTEM

Contact Us

022-28947733

sales@biotechindia.net

www.biotechstriker.com

RSD 4D system is a True Non-Surgical 3d Spinal Decompression treatment that is specifically developed to provide relief of pain, and other symptoms associated with Herniated Discs, Bulging Discs, Degenerative Disc Disease, and protruding discs.

- Separate lumbar and cervical decompression programming
- Lumbar Decompression in Prone or Supine position. As per the patient need, Lumbar section can be adjust in 3 dimensional plane, Lumbar Flexion or extension with side flexion, and rotation along with distraction
- Cervical Decompression: Supine with motorized Flexion and Extension. The cervical assembly can be adjusted from -20 to 30 degrees.
- All Adjustable positions are motorized, controlled by a computerized cockpit. Safe, gentle, and precise.



CERVICAL FLEXION/ EXTENSION



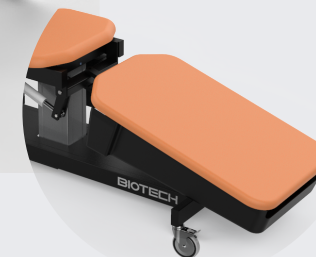
ROTATION



SIDE FLEXION



LUMBER EXTENSION



LUMBER FLEXION